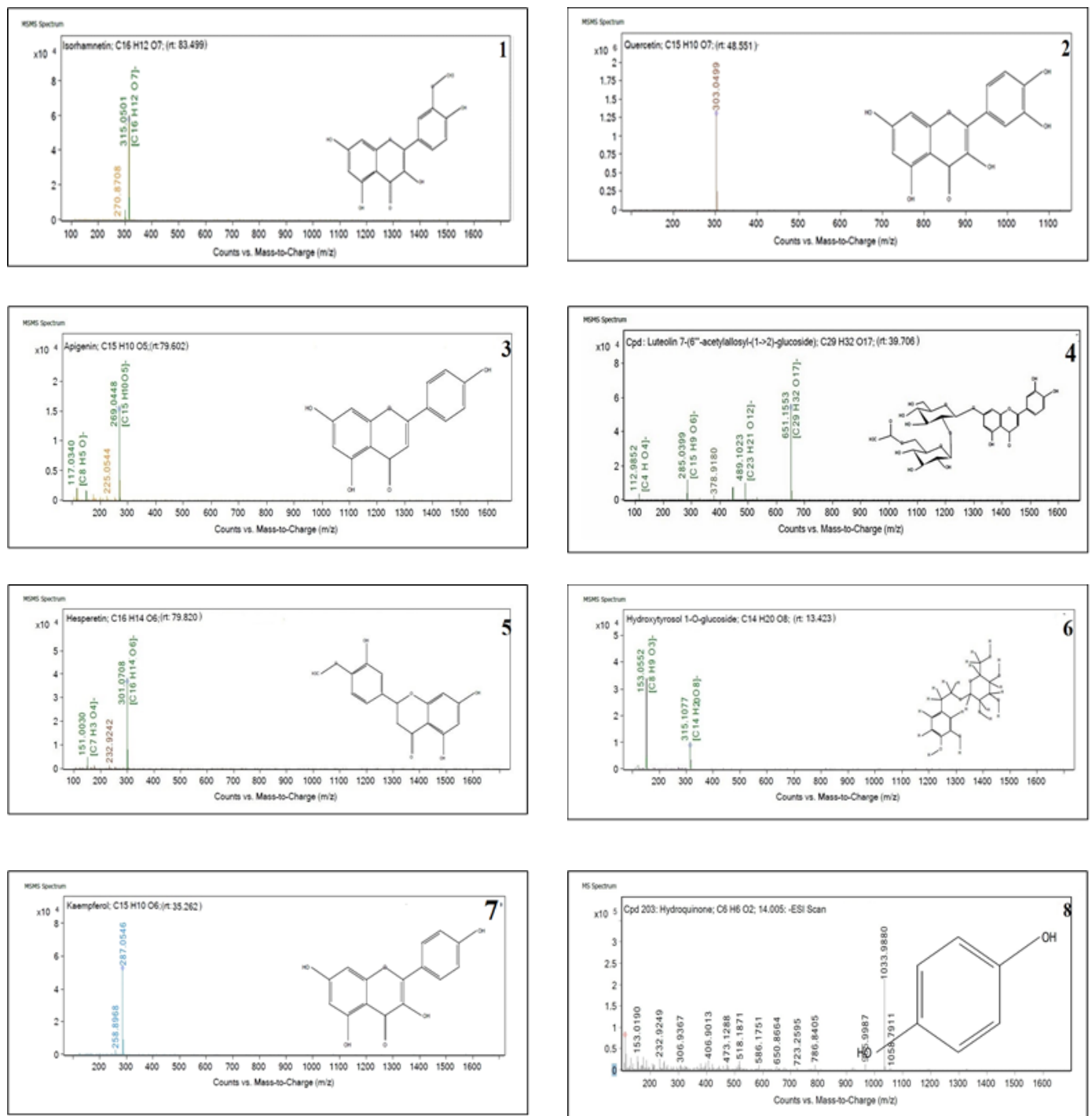


## SUPPLEMENTARY MATERIAL



**Figure S1.** Mass spectrum of antioxidant components of MLE, (1) Isorhamnetin; (2) Quercetin; (3) Apigenin; (4) Luteolin 7-(6''-acetyl allosyl-(1->2)-glucoside); (5) Hesperetin; (6) Hydroxy tyrosol 1-O-glucoside (HT); (7) Kaempferol; (8) hydroquinone; (9) Chlorogenic Acid; (10) Ferulic Acid; (11) Geniposide; (12) Inosine ; (13) Quinic acid; (14) Rutin ; (15) L-Threonate ; (16) Tirandamycin; (17) Salidroside; (18) Folic acid; (19) Caffeoylquinic acid; (20) Piperic acid; (21) Lobeline; (22) Granisetron; (23) Ramipril glucuronide; (24) Crocin 3; (25) Cilostazol; (26) Aucubin; (27) 3- Hydroxycapric; (28) Astragaline; (29) Ceanothine E ; (30) Salicylanilide; (31) Succinoadenosine; (32) naringenin-7-O-glucuronide; (33) Isovitexin; (34) dephospho-coA; (35) Nimodipine; (36) idebenone; (37) Aesculin; (38) Cinnamic acid; (39) penicillamine disulfide; (40) Embelin.

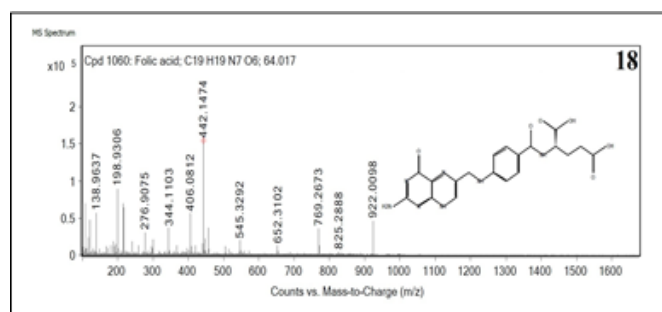
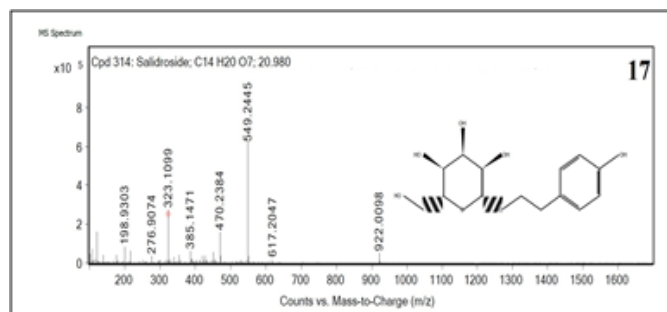
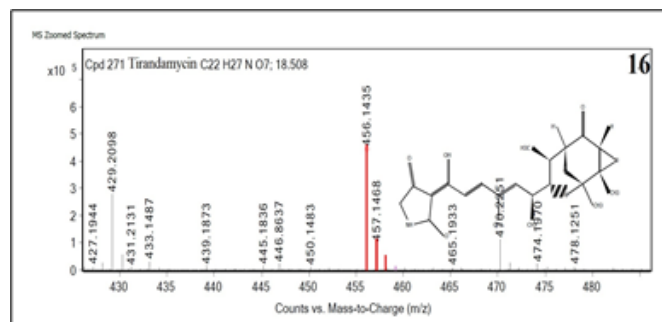
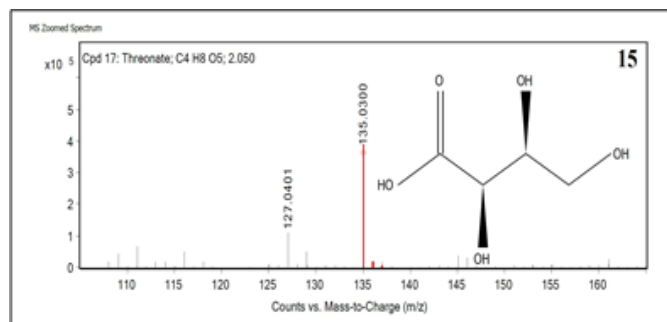
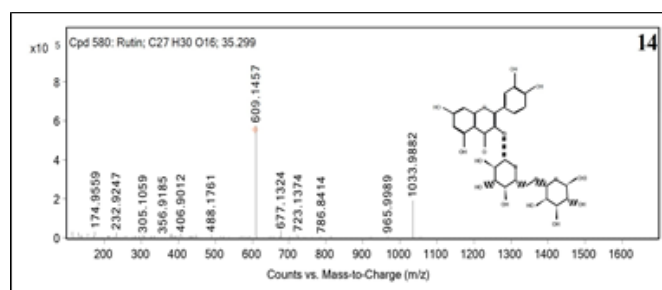
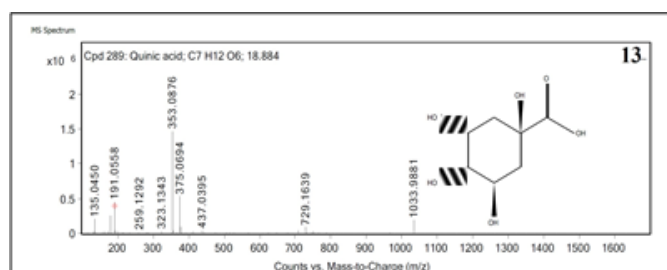
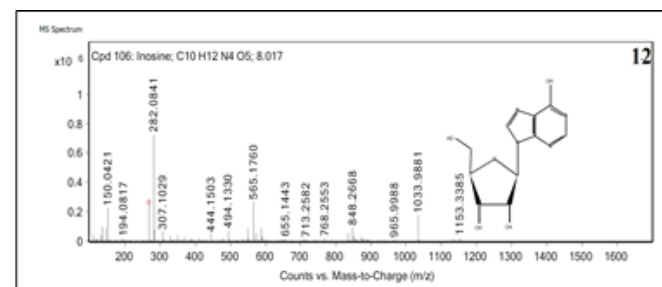
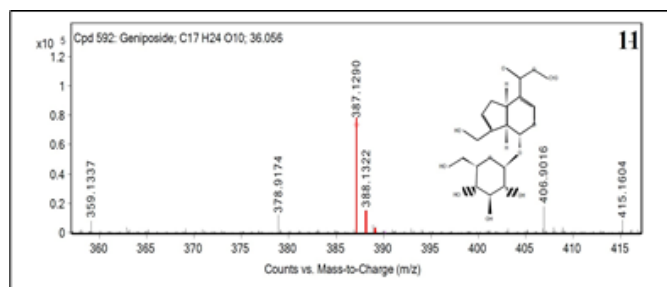
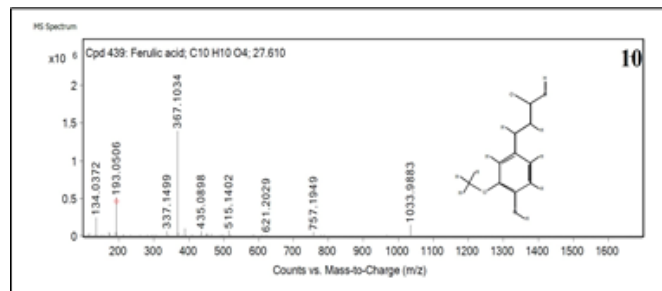
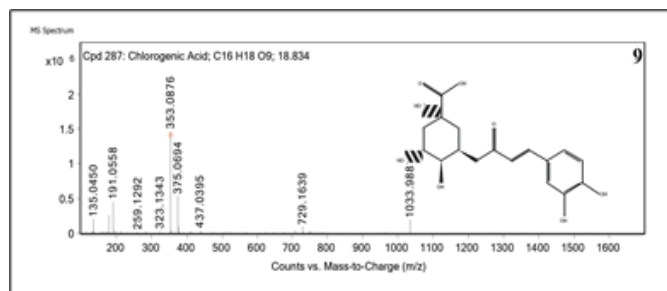


Figure S1. Continued.

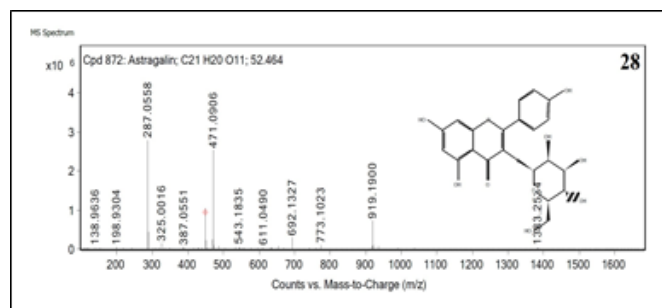
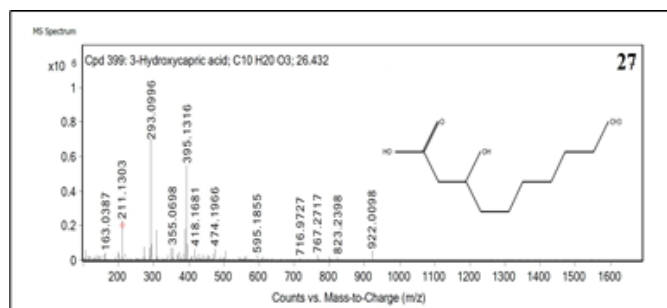
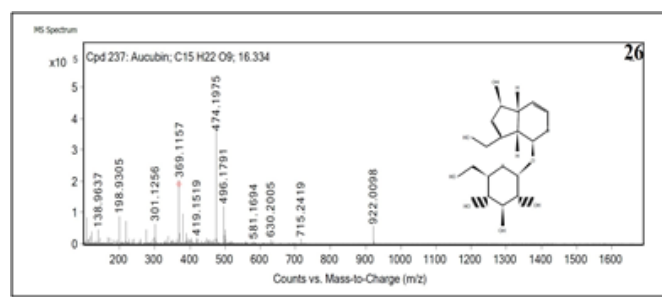
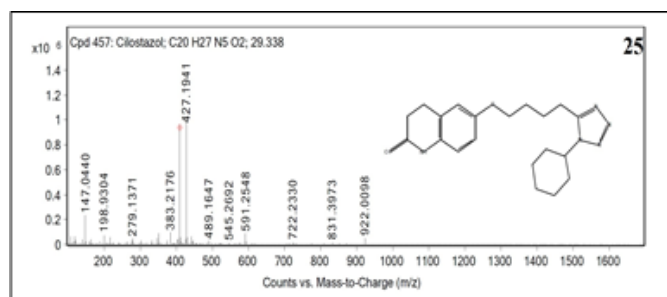
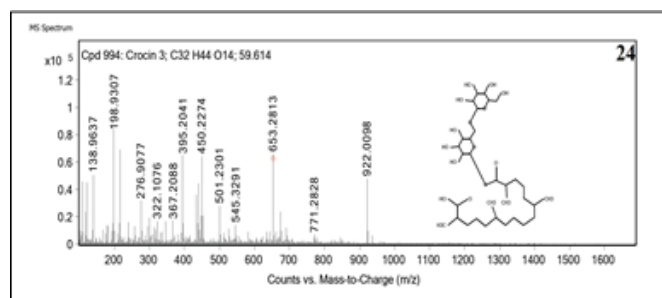
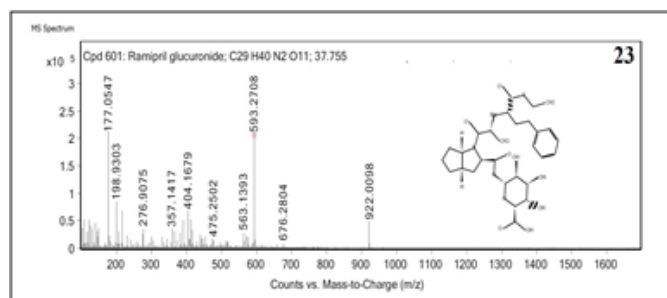
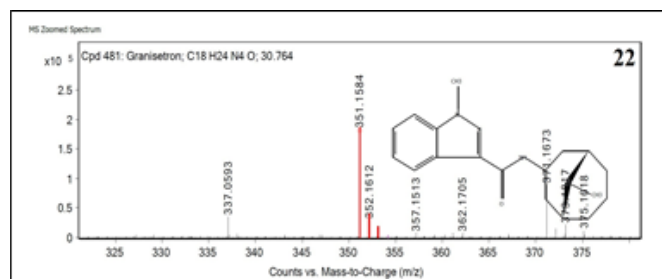
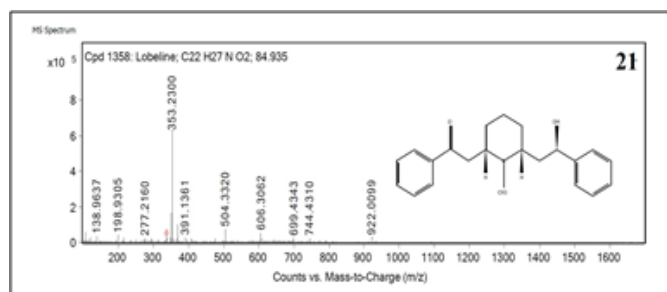
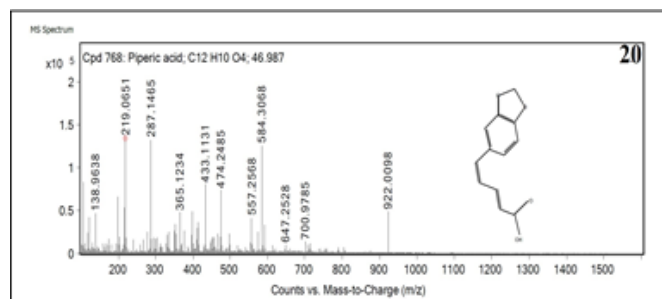
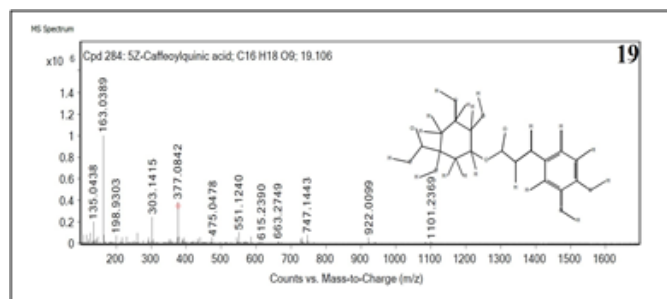


Figure S1. Continued.

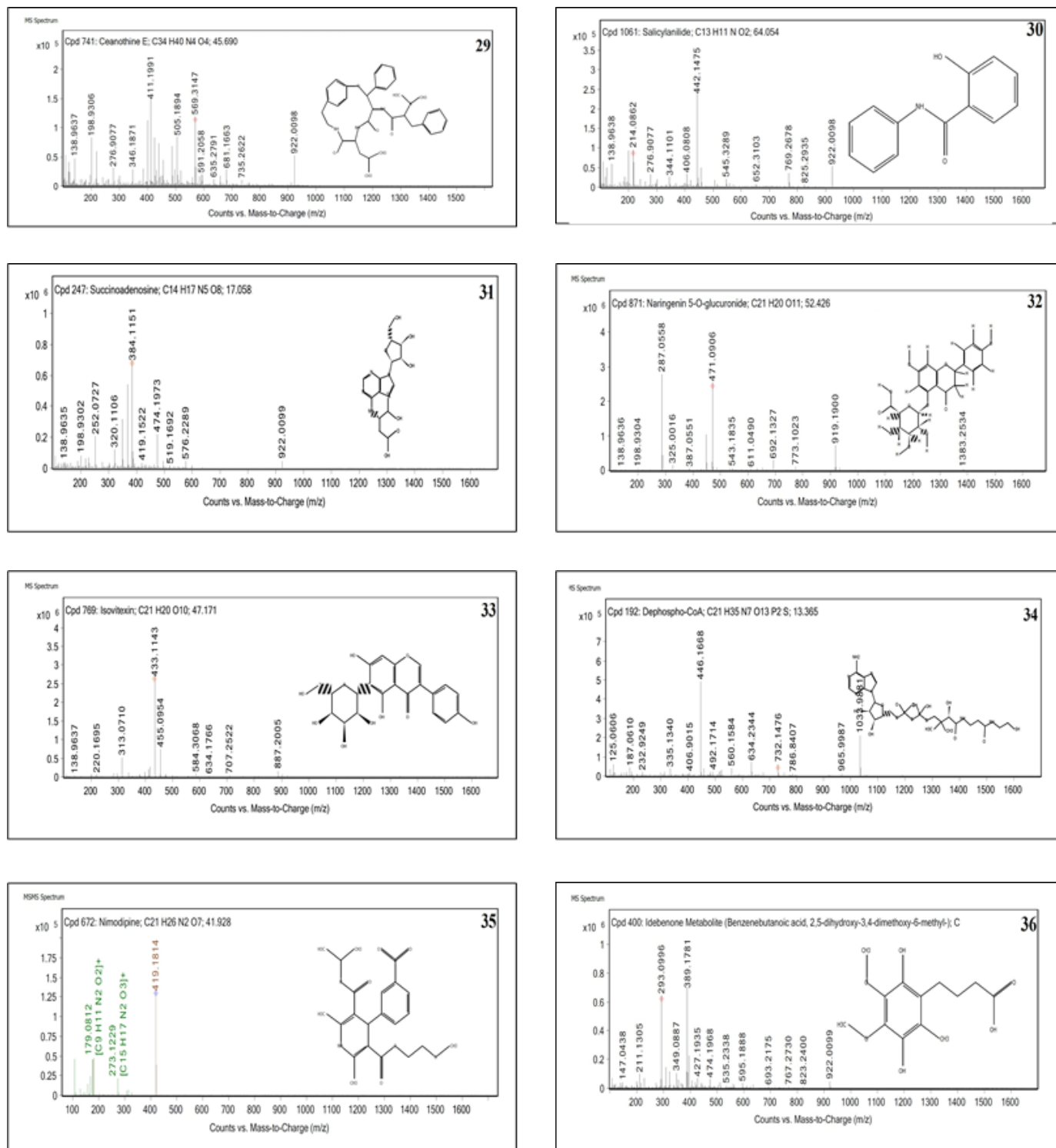


Figure S1. Continued.

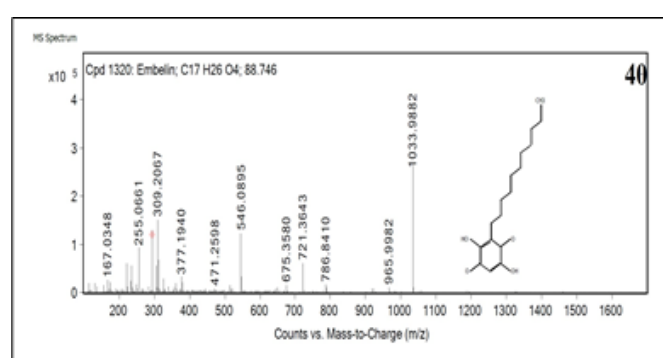
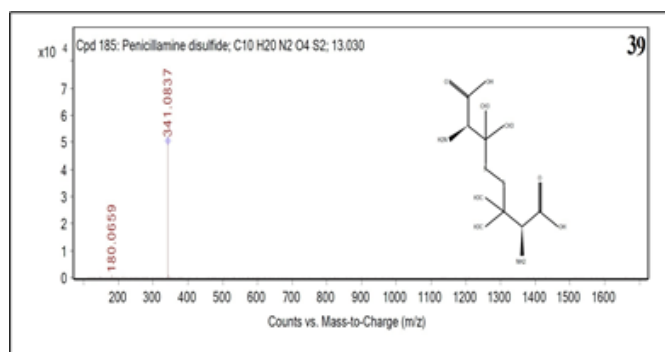
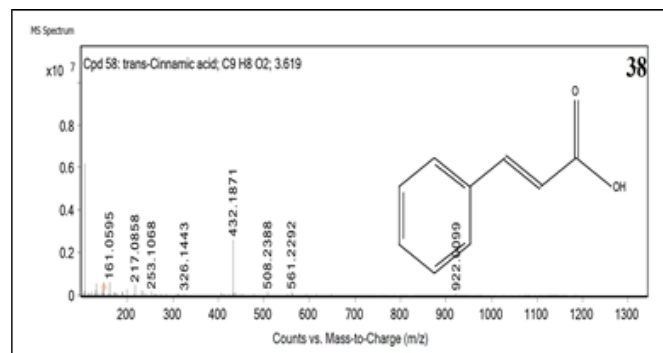
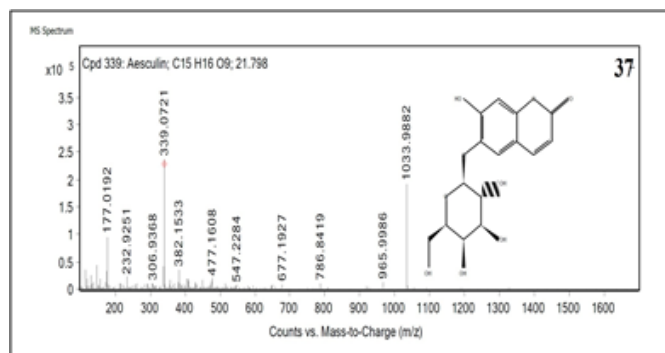


Figure S1. Continued.